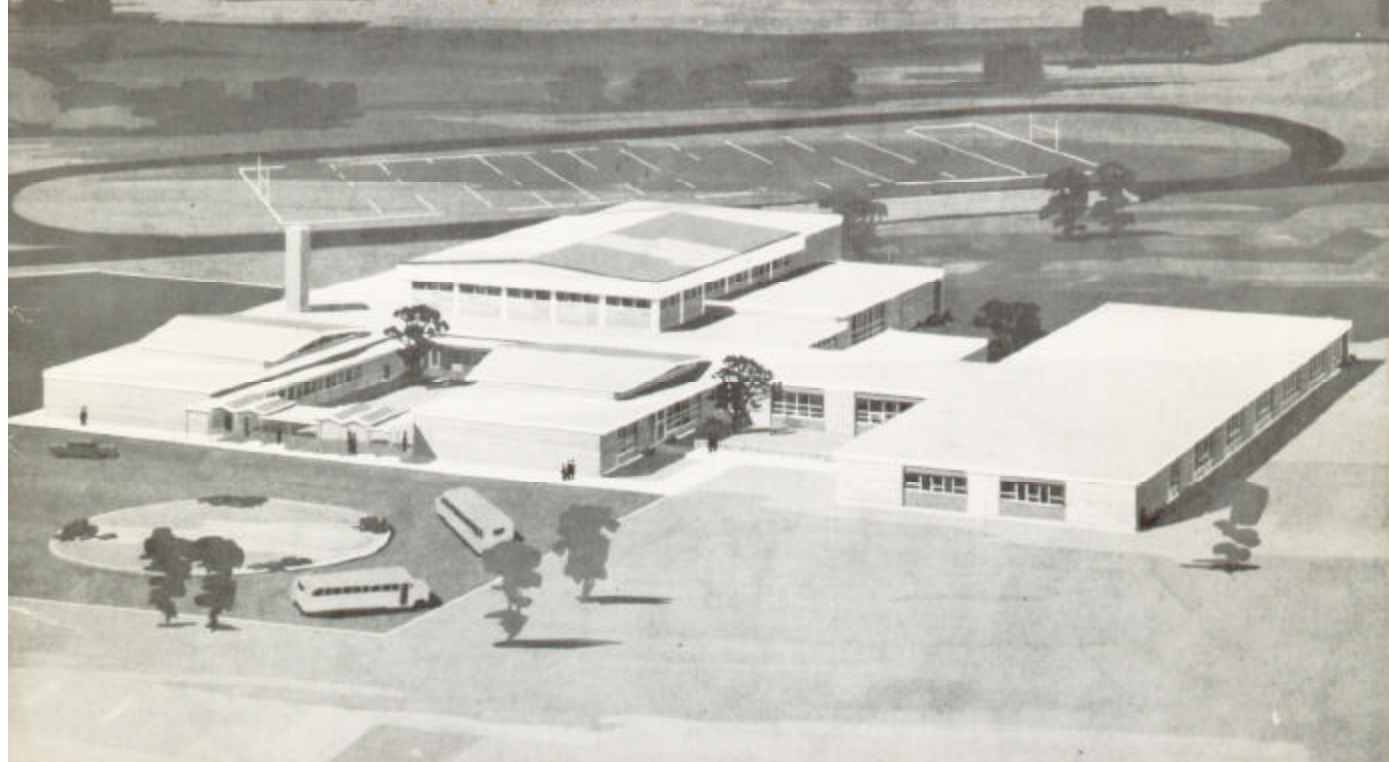


LOUISIANA HIGH SCHOOL



LOUISIANA HIGH SCHOOL

Dedication 1962

November Four

TRIPLET'S

Board of Education

LOUISIANA R-II SCHOOL DISTRICT

BURDELL MILLNER
W. R. WILLIAMSON
RICHARD J. DETERS
JOHN LOGAN
GLENN THOMAS
J. B. TALLEY

Past Members who were a part of the Building Improvement Program

MARION R. PARKER
CHARLES H. LEWELLEN



Welcome . . .

With great pride we present the new Louisiana High School. Through your efforts as adult citizens, the boys and girls of Louisiana may look forward to increased educational opportunities in the future —

J. A. WOOLCOTT, *Superintendent*



HOME ECONOMICS

Practice makes perfect . . . Home Ec. classes learn home making skills



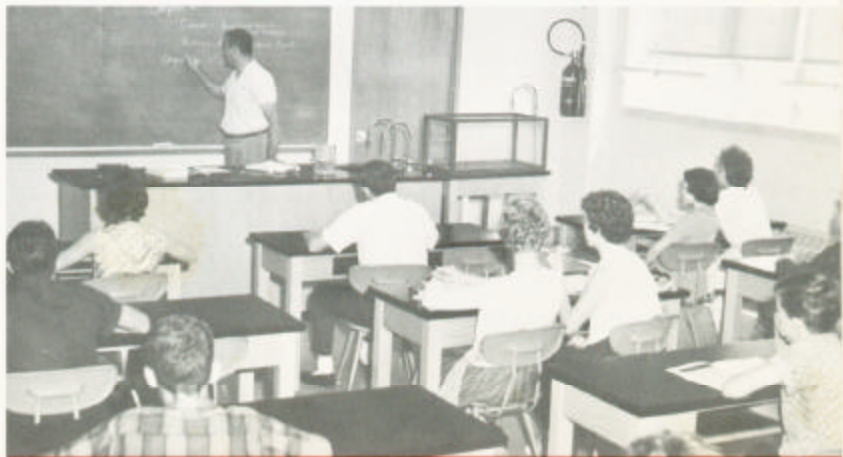
CHEMISTRY

Chemistry students learn to make apparatus



BIOLOGY

Learning what makes life tick



Louisiana High School Dedication Program

NOVEMBER 4, 1962 • 2 P. M.



Music Selections.....	Louisiana High School Band
Dedication — —	<i>Frangkiser</i>
Star Spangled Banner	
Invocation.....	REV. C. H. BOPP, <i>Pastor, Louisiana Lutheran Church</i>
Introduction of Platform Guests.....	J. A. WOOLCOTT, <i>Superintendent of Schools</i>
Presentation of Building.....	RICHARD PEARCE, <i>Pearce and Pearce, Inc. - Architects</i>
Acceptance of Building....	BURDELL MILLNER, <i>President, Louisiana Board of Education</i>
Acceptance of Building for Students...	LEWIS TAYLOR, <i>Principal, Louisiana High School</i>
Comments.....	VIOLA BRANDT, <i>State Department of Education</i>
Introduction of Speaker.....	J. A. WOOLCOTT
Dedicatory Address....	DR. FRANK HEAGERTY, <i>Associate Professor, University of Missouri</i>
Music Selections.....	Louisiana High School Chorus
The Prayer Perfect — —	<i>Stenson</i>
The Heavens are Telling from "The Creation" — —	<i>Hayden</i>
Benediction.....	REV. C. H. BOPP



OPEN HOUSE AFTER DEDICATION PROGRAM

Your Hosts — Louisiana High School Student Council

Louisiana High School Dedication Program

NOVEMBER 4, 1962 • 2 P. M.

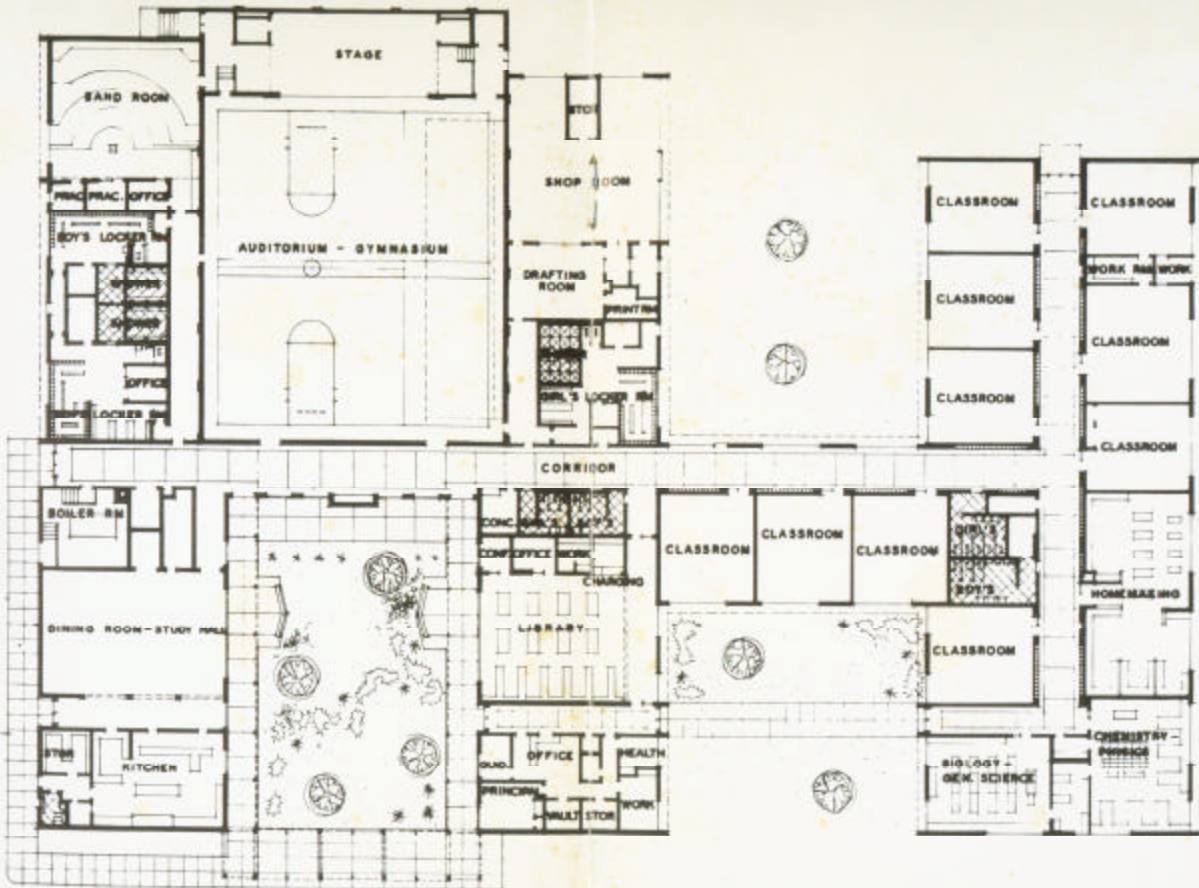


Music Selections.....	Louisiana High School Band
Dedication — —	<i>Frangkiser</i>
Star Spangled Banner	
Invocation.....	REV. C. H. BOPP, <i>Pastor, Louisiana Lutheran Church</i>
Introduction of Platform Guests.....	J. A. WOOLCOTT, <i>Superintendent of Schools</i>
Presentation of Building.....	RICHARD PEARCE, <i>Pearce and Pearce, Inc. - Architects</i>
Acceptance of Building....	BURDELL MILLNER, <i>President, Louisiana Board of Education</i>
Acceptance of Building for Students...	LEWIS TAYLOR, <i>Principal, Louisiana High School</i>
Comments.....	VIOLA BRANDT, <i>State Department of Education</i>
Introduction of Speaker	J. A. WOOLCOTT
Dedicatory Address....	DR. FRANK HEAGERTY, <i>Associate Professor, University of Missouri</i>
Music Selections.....	Louisiana High School Chorus
The Prayer Perfect — —	<i>Stenson</i>
The Heavens are Telling from "The Creation" — —	<i>Hayden</i>
Benediction.....	REV. C. H. BOPP



OPEN HOUSE AFTER DEDICATION PROGRAM

Your Hosts — Louisiana High School Student Council



FLOOR PLAN



LOUISIANA HIGH SCHOOL
 LOUISIANA R-2 SCHOOL DISTRICT
 PIKE COUNTY, MISSOURI
 PEARCE AND PEARCE, INC.
 ARCHITECTS AND ENGINEERS





LIBRARY

*Student and faculty reading
for work and pleasure
or
Silence — almost*



**PHYSICAL
EDUCATION**

*Physical Fitness program
in action*



CAFETERIA

LUNCH TIME . . . Cafeteria in Action



INDUSTRIAL ARTS

Industrial Education Laboratory being used by General Shop students



MUSIC

Education for living not just making a living



Construction & Financial Data

Architects

PEARCE AND PEARCE, INC. • ST. LOUIS, MO.

Contractor

BUCKLEY CONSTRUCTION CO. • ST. LOUIS, MO.

General Construction	\$664,640.00
Site (<i>Purchase and Improvement</i>)	42,185.19
Architects and Engineers	42,056.34
City Sewer Extension	20,058.00
Furnishings and Equipment	79,670.71
Total	848,610.24
<i>Unit Cost</i>	<i>\$13.16 per sq. foot</i>



Sizes & Capacities

Area of Building Site (acres)	29.95
Area of Building (sq. feet)	50,485
Student Capacity	500
Gymnasium Seating	700
Library Seating	50
Cafeteria Seating	150

Construction & Financial Data

Architects

PEARCE AND PEARCE, INC. • ST. LOUIS, MO.

Contractor

BUCKLEY CONSTRUCTION CO. • ST. LOUIS, MO.

General Construction	\$664,640.00
Site (<i>Purchase and Improvement</i>)	42,185.19
Architects and Engineers	42,056.34
City Sewer Extension	20,058.00
Furnishings and Equipment	79,670.71
Total	848,610.24
<i>Unit Cost</i>	<i>\$13.16 per sq. foot</i>



Sizes & Capacities

Area of Building Site (acres)	29.95
Area of Building (sq. feet)	50,485
Student Capacity	500
Gymnasium Seating	700
Library Seating	50
Cafeteria Seating	150

TO OUR CHILDREN WE OWE OUR BEST



A Prayer for the Opening of this School

“O Lord, Help me today and every day to do three things: To awaken one child to a sense of his divine selfhood that he may take charge of his own life: To come close to some child that thru my love and concern for him he may gain a sense of his own dignity and worth: To help make the community a better place, freer from the weeds of distraction and exploitation, so that truth, goodness, and beauty shall become the natural heritage of all children.”

N. E. A. JOURNAL, *November, 1954*